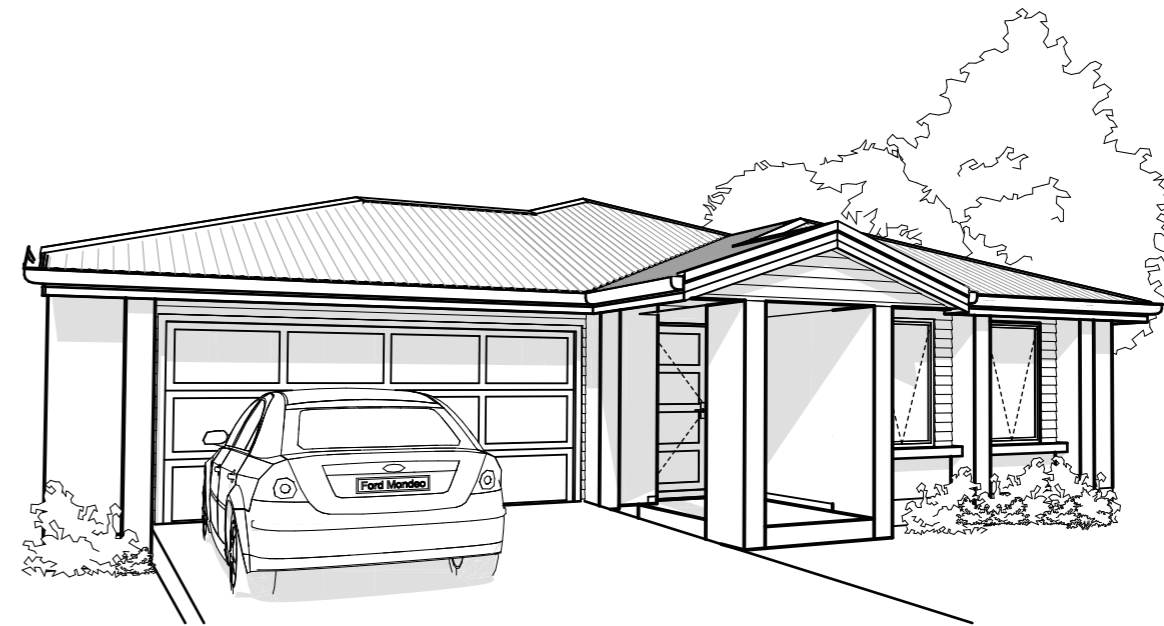
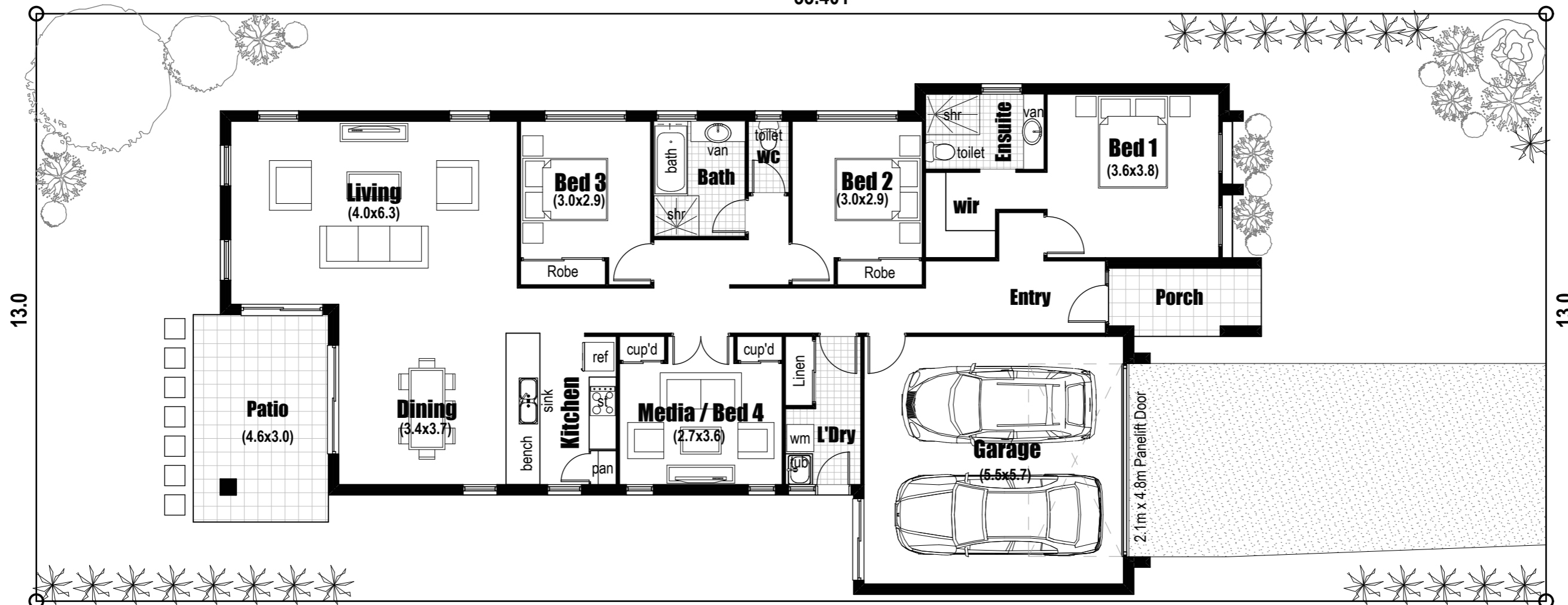


Elevation



33.401



33.401

Floor Area	
Ground Floor	151.96m ²
Garage	34.72m ²
Porch	4.97m ²
Patio	13.72m ²
TOTAL	205.37m²

Floor Plan - Willowbank 200



**DESIGN
BUILDING
CONSTRUCTION**

PO Box 1030 Paradise Point 4216
Phone: 0438 881 208
Fax: 07 5564 1088
www.dbcql.com.au